

YEAR 3 - YEAR 6 PROGRAM



#30

JENNY'S PAINTED POTS TUESDAY 7TH

Jenny's Painted Pots from Avalon is visiting us to run a pottery painting day. You'll get to decorate your own pot and take it home with you

*2



#24

MUSEUM OF ILLUSION

Step into a world of mind-bending fun at the Museum of Illusions Sydney! Get ready to explore the interactive exhibits, tricky optical illusions, and hands-on puzzles that challenge the brain and spark your curiosity

****EARLY BUS 9:30AM****

*3



#30

CREATIVE WRITING WEDNESDAY 8TH

Come along to learn about the creative writing process and make your own stories with a published author, our very own Matilda.

*2



#32

SYDNEY ROYAL EASTER SHOW

Come join us for the excitement of the Sydney Royal Easter Show! From thrilling rides to live entertainment, it's a full day of fun, laughter and thrills with friends!

BYO SPENDING MONEY FOR RIDE & GAME CREDITS

****EARLY BUS 9:30AM****

*4



#30

UNDER THE SEA THURSDAY 9TH

Diver Dave is bringing along his aquatic friends for us to meet. Come along to learn about sea life and even get to touch live sea creatures in the splash tank

*2



#24

NARRABEEN GYMNASTICS

Flip, jump, and tumble at Northern Beaches Gymnastics Academy! With expert coaches guiding the way towards fun thrills and new skills!

**** WAIVER NEEDED & EXTRA \$15****

*3



#45

BUILD-A-BEAR SHARED LUNCH FRIDAY 10TH

Bring along a small share plate of your favourite food for lunch! We will be stuffing our bears so they can join us for a picnic on a day of food and fun.

*3



#32

LEGO ROBOTICS MONDAY 13TH

Take part in an engaging program where we learn about robotics and coding. What kind of robot will you build and what will it do?

*2



#20

CALMSEY FARM IN ABBOTSBURY

Come along and enjoy a hands-on farm adventure at Calmsley Hill City Farm! Meet friendly farm animals, learn about life on the farm, and experience interactive demonstrations in a fun, outdoor setting.

EARLY BUS 9:30AM

*3



#32

CUCINA PER BAMBINI TUESDAY 14TH

The Kid's Cottage Kitchen is back with classic Italian cuisine featuring pizza and pasta. Our tastebuds will be going on a trip across the globe as we appreciate the flavours of Rome, Milan, Naples and more.

*2



#24

PICKLE BALL AT MOSMAN

Get active with us as we try out a new fast-growing favourite, Pickleball! This exciting paddle sport combines elements of tennis and ping pong.

This excursion is sure to be an ace!

*3



#32

BASKETBALL CLINIC WEDNESDAY 15TH

We are welcoming Coach Jenkins from Team Triple Threat Hoops to run a basketball clinic here at Cottage. Improve your dribbling, passing and shooting through fun games and skill-focused drills.

*2



#20

ALL YOU CAN EAT IN BANKSTOWN

Make room in your tummy! Kids Cottage is heading to an all-you-can-eat buffet in Bankstown, where there'll be plenty of delicious options to enjoy and something for everyone to try. Come hungry and ready to eat!

*3



#32

CHEMISTRY FOR KIDS THURSDAY 16TH

Join us for a lineup of great experiments that showcase how different materials react with each other. We will get to feel changes within everyday objects and witness a big elephant toothpaste explosion.

*2



#20

BOUNCE IN CROMER

Jump into high-energy fun with Kids Cottage as head to BOUNCE in Cromer! From trampolines to obstacle courses, there is something for everyone.

EXTRA CHARGE \$10

*3



#32

WINTER OLYMPICS CARNIVAL FRIDAY 17TH

Compete for your country at our Winter Olympics Carnival. We're bringing games and challenges themed around the Winter Olympics to celebrate the global event.

*2

YEAR 3 - YEAR 6 PROGRAM

PLANETARIUM: ABORIGINAL ASTRONOMY MONDAY 20TH



#30

Explore Indigenous Australian sky stories in this fascinating mobile Planetarium show. Learn about Aboriginal stories related to navigation, history, spirituality, seasons and more. *2



#32

UNDERWORLD LASER @ MENAI

Gear up for an action-packed adventure at Underworld Laser, full of thrilling battles of lights and fun! *4



*4



#30

SURVIVOR: KIDS COTTAGE TUESDAY 21ST

Outwit, Outplay, Outlast. Survivors grab your buffs and take on challenges that test your speed, endurance, strategy and quick thinking. Which tribe has what it takes to win? *2



#32

TURBO CLIMB @ BANKSTOWN

Reach new heights at Turbo Climb! Come join Kids Cottage as we push our limits, trying out their colourful and challenging climbing walls and seeing if we can reach the peak. ***EXTRA CHARGE \$10*** *4



*4

KEY:



= a **BUS** will be taken



= we will be **WALKING**



= a **FERRY** will be taken



= we will use Public

Transport

PLEASE READ THE RISK ASSESSMENTS, EXCURSION INFORMATION INCLUDING EXCURSION WAIVER FORMS (IF REQUIRED) & BUS SCHEDULE ON THE FOLLOWING PAGES

VACATION CARE - EXCURSION INFORMATION & WAIVERS

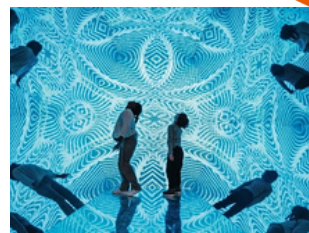
YEAR 3 - YEAR 6 EXCURSION INFORMATION

Tuesday 7th April - Museum of Illusion

Excursion time: 9:30am- 2:15pm

Address: 413 George St, Sydney NSW 2000

More Information: <https://moisydney.com/>



Wednesday 8th April - Sydney Royal Easter Show

Excursion time: 9:30am- 3pm

Address: Sydney Showground, Grand Parade, Sydney Olympic Park NSW 2127

More Information: <https://www.eastershow.com.au/>



Thursday 9th April - Narrabeen Gymnastics

Excursion time: 10:30am- 3:15pm

Address: 1525 Pittwater Rd, North Narrabeen

WAIVER:

<https://form.jotform.com/221431254254850>

More Information: <https://www.nbgacademy.com.au/>



Monday 13th April - Calmsley City Farm

Excursion time: 9:30am- 3:30pm

Address: 31 Darling St, Abbotsbury, NSW 2176

More Information: <https://www.calmsleyhill.com.au/>



Tuesday 14th April- Pickleball Mosman

Excursion time: 10:45am- 1:15pm

Address: 1 Cross St, Mosman NSW 2088

More Information:

<https://www.mosmanpickleball.com.au/>



Wednesday 15th April - All you can eat

Bankstown

Excursion time: 10:45am- 2:30pm

Address: 1 Meredith St, Bankstown

More Information:

<https://www.starbuffet.com.au/locations/bankstown/>



VACATION CARE - EXCURSION INFORMATION & WAIVERS

YAER 3 - YEAR 6 EXCURSION INFORMATION

Thursday 16th April- Bounce

Excursion time: 10:45am- 2:15pm

Address: 4-10 Inman Rd, Cromer

More

Information: <https://bounceinc.com.au/venues/cromer/>

Monday 20th April- UnderWorld Laser Menai

Excursion time: 10:45am- 2:30pm

Address: Suite 1, Level 1/44-60 Allison Cre, Menai
NSW 2234

More Information: <https://underworldlaser.com.au/>

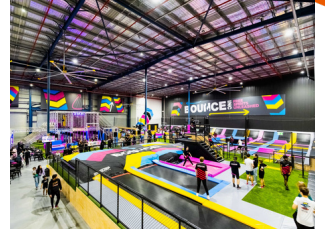
Tuesday 21st April- Turbo Climb Bankstown

Excursion time: 10:45am- 2pm

Address: 8 Greenfield Pd, Bankstown, NSW 2200

More Information:

<https://turboclimb.com.au/locations/turbo-climb-bankstown/>

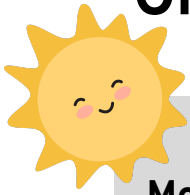




VACATION CARE IMPORTANT INFORMATION

Contact Information
Phone: 02 9056 1113
info@kidscottagemiddleharbour.com

OPERATING HOURS



Vacation Care Hours are
Monday to Friday 8am to 6pm
Pick up after 6pm will incur a Late
fee.

**Vacation Care is available for
Middle Harbour students K-6
and students K-6 from Non
Middle Harbour Schools**

FEES

Middle Harbour Student

Incentre \$96
Excursion \$106

Non Middle Harbour Student

Incentre \$109.50
Excursion \$117.60

NOTE - Some excursions may
incur an **additional fee** this will be
outlined on our vacation care
program

- Absences will still be charged

PAYMENTS

Payments are made via the
debitsuccess payment system.
Please ensure your payment
details are correct and up to date
via the Xplor Home app.

HOW TO BOOK

Please read through our new booking
instructions.

STEP 1 - COMPLETE OUR VACATION CARE ENROLMENT FORM

complete any **WAIVERS** if
reqd. the online waiver links are in
the enrolment form & program.



STEP 2 - BOOK IN VIA YOUR XPLOR HOME APP

watch instructions here



WAIVERS, RISK ASSESSMENTS & RATIOS

RISK ASSESSMENTS

Risk assessments for each excursion
are linked in our program and must
be read prior to your child attending
the excursion.

WAIVERS

If your child's excursion requires a
waiver you will find the waiver link on
the vacation care enrolment form and
program. Waivers must be completed
and signed prior to booking in via
your Xplor app.

RATIOS

Our **Child to Staff ratio** is:

Incentre 1:15

On Excursion 1:8

Water Based Excursions 1:5



VACATION CARE

IMPORTANT INFORMATION

WHAT TO BRING

- Children should pack -
- Morning tea & lunch - afternoon tea and a late snack is provided
- A refillable drink bottle
- A raincoat
- A spare change of clothes
- For water based activities pack a towel, swimmers, rashie and plastic bag for wet clothes



Kids Cottage is a NUT FREE centre.

Please consider this when packing morning tea and lunch. Kids Cottage serves afternoon tea and late snack.

Please DO NOT bring -

- Toys or items from home
- Mobile phones, smart watches or electronic devices
- Personal electronic devices unless pre approved by Kids Cottage and our 'Personal Devices Code of Conduct' has been signed.

WHAT TO WEAR

Children must wear:

- a hat
- a top that covers shoulders
- sunscreen
- enclosed sensible walking shoes



EXCURSION INFORMATION

- On the day of excursion please **arrive 30 minutes before the scheduled departure time.**
- Children will leave the centre for excursions at 10am and return by 3:30pm
- **EARLY departure** excursion times are stated on our program and on the vacation care enrolment form
- Children will either travel via private bus, a public ferry or train. This will be displayed on the programmed activity on the top right hand corner.
- For buses travelling on high ways and over the speed of 110km seatbelts will be worn.



ABSENCES, CHANGES OR CANCELLATIONS

- Please mark your child absent via your Xplor home app or email
- If your child is absent the vacation care fee still applies
- **We require 14 days notice to change , swap or cancel vacation care bookings**
- If your child would like to swap from an excursion to the incentre activity on the day and we have space available, we will still charge you the original excursion fee.

NOTE Kids Cottage reserves the right to make changes to the activity or excursion schedule, including cancellations or substitutions, due to unforeseen circumstances such as weather or safety concerns.